



## OpenPlant Isometrics Manager V8i (SELECTseries 5)

Generate Intelligent Isometrics from Multiple Sources

Piping isometrics are among the most important deliverables from plant models. OpenPlant Isometrics Manager V8i (SELECTseries 5) is a flexible, powerful application that runs independent from expensive plant design systems, allowing non-engineers to quickly create and manage isometrics.

### Independent Isometrics Production Increases Productivity

OpenPlant Isometrics Manager V8i allows isometrics to be independently produced by document control or other supporting project personnel, freeing piping designers to focus on design activities. By managing isometric production through project-based rules, the software provides users with a way to easily generate isometrics from either OpenPlant ModelServer V8i or an OpenPlant-based i-model using a simplified interface, without the need for a complex design application. It also enables project teams to output in either DGN or RealDWG formats.

### Simple GUI for Isometrics Configuration Means Better, Faster Project Startup

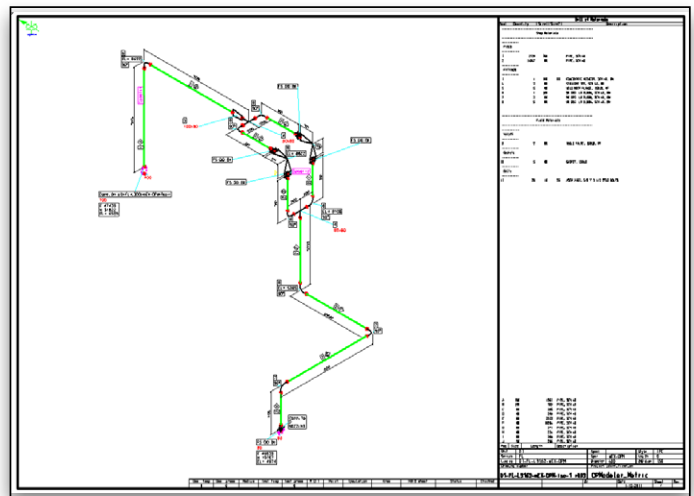
Quickly create isometrics styles for each project through the powerful, yet easy to use graphical user interface for isometric configuration. This eliminates the complexity and extensive time needed in other products that require switches, auxiliary configuration files, and more. Projects can begin faster, run more accurately, and address the needs of each customer more rapidly.

### ProjectWise Integration Provides Document Management and Global Distribution

OpenPlant Isometrics Manager V8i can be integrated with ProjectWise® V8i, to allow finalized isometrics to be posted directly into the document repository with automatic version control. This enables team members, regardless of location, to access the most current versions of these contracted deliverables.

### Intelligent Isometrics Provide Useful Data for the Entire Project Lifecycle

OpenPlant Isometrics Manager V8i automatically creates an intelligent file, which includes the graphics and associated piping data. This allows users to search and query data within these documents without the need for access to the plant design model.



An example of a simple interface for isometric drawing creation.

### Rule-based Management Ensures Accurate, Up-to-date Isometrics

Isometrics can be produced from OpenPlant ModelServer based on design states such as "Issued for Construction." Rules can be defined to control what type of isometric to produce and, more importantly, whether an isometric can be created if the components are not at a predetermined design state. Time spent checking and reviewing isometrics is now focused on the proper documents where the status is known.

### Multiple Styles Provide Fit-for-purpose Drawings

OpenPlant Isometrics Manager V8i provides for the creation of many isometric styles for specific purposes in the project, each with its own set of rules for design status and layout types. The resulting isometric drawings can be placed into their own folder within ProjectWise V8i for versioning and distribution to a globally distributed project team. Delivered styles include As-Built, Check, IFC, Stress, and Tracing. Additional user-defined styles can be created to suit project requirements. ProjectWise provides for remote access, allowing users, such as fabricators, to see the most current information.

## System Requirements

### Software

ProjectWise Explorer V8i  
(SELECTseries 3 or higher)

Prerequisites for Bentley Desktop  
Applications v08.11.09.03

### Processor

Intel Pentium 4 or AMD processor,  
3.0 GHz or greater; Intel or AMD Dual  
Core Processor, 2.0 GHz or greater

### Operating System

Windows 7 (64-bit),  
Windows 8.1 (64 bit)

### Memory

8 GB or more recommended

### Disk Space

1.3 GB minimum free hard disk space

### Video

Any card that fulfills MicroStation V8i  
requirements. Graphics card supported  
by DirectX 9.0c, 256 MB or higher of  
video memory is recommended.

**Find out about Bentley  
at: [www.bentley.com](http://www.bentley.com)**

### Contact Bentley

1-800-BENTLEY (1-800-236-8539)  
Outside the US +1 610-458-5000

### Global Office Listings

[www.bentley.com/contact](http://www.bentley.com/contact)

# OpenPlant Isometrics Manager V8i At-A-Glance

## Interoperability

- Generate PCF files to pass data to existing fabrication systems
- Produce isometrics from OpenPlant, AutoPLANT, and AutoPIPE
- Create isometric deliverables in DGN or RealDWG formats
- Works with OpenPlant and AutoPLANT Central Management
- Use a common set-up and configuration through ProjectWise managed Workspaces
- Store similar isometrics in a central location
- Examine components from the same model using different views
- Navigate between models and isometrics

## Design Model Component Information

- Perform intelligent queries against components (that is, look for those containing identical information to 3D design models)
- View relevant data available in other areas of the design and construction process

## Isometric Production

- Separate isometric production from piping design applications
- Control isometric generation by status settings
- Generate different isometric production log files

## Usability

- Easy-to-use interface designed for non-piping users – no need to understand cryptic switches, auxiliary file structures, or settings

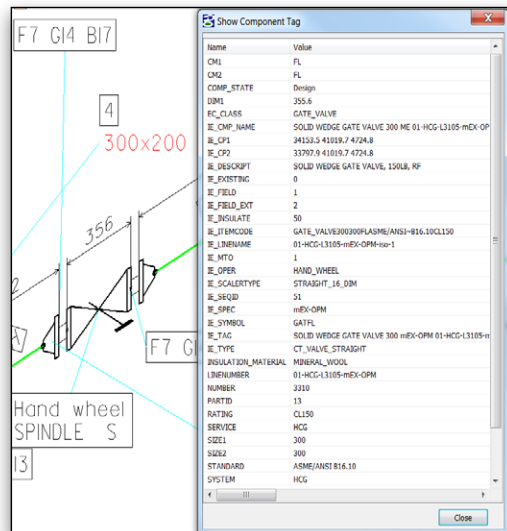
- Straightforward query tool to easily search for a specific group of components, such as a line number
- Project-driven drawing output and bill-of-material definitions

## Isometrics Drawing and Style Configuration

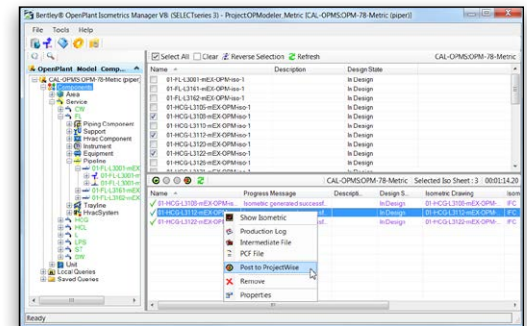
- Intelligent isometric drawings include graphics
- Easy-to-configure isometrics styles – no more switches to remember
- User-configurable drawing layouts and reporting
- Simple isometrics symbols creation using MicroStation cells
- Customized drawing attributes for additional pipeline information
- Fully configurable bill-of-material layout

## ProjectWise Integration

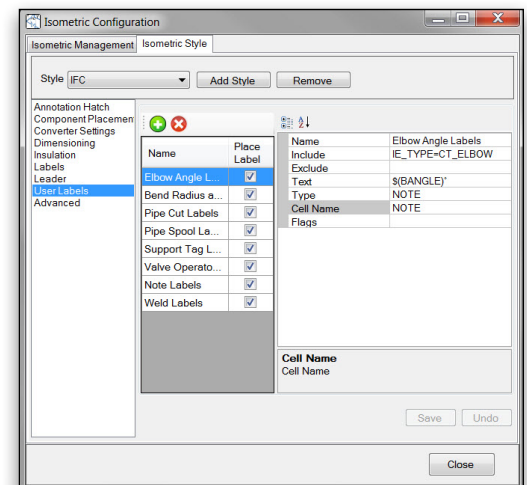
- Manage multiple projects from a single model or data source
- Include metadata with documents
- Save user queries locally or to ProjectWise for team access
- Edit isometric name expressions
- Create isometrics based on design-state
- Browse element information or specific components or sets of components



*OpenPlant Isometrics Manager accesses and manages the full information about components in the isometric.*



*Using a direct connection to ProjectWise provides integral document management through OpenPlant Isometrics Manager.*



*GUI-driven configuration tools provide simple isometric configuration.*