

OpenPlant Orthographics Manager V8i (SELECTseries 5)

Faster, Higher-quality General Arrangement Drawings

OpenPlant Orthographics Manager V8i (SELECTseries 5) automates the extraction and production of high-quality general arrangement plant drawings from a 3D model, saving EPCs and owner-operators time and money. Automatic single and double line drawings, annotations, dimensions, and label placements accelerate drawing preparation, ensure consistent legibility, and enable designers to stay more focused on their primary jobs.

Drawing Automation for Increased Productivity

OpenPlant Orthographics Manager automates the production of drawings and increases productivity allowing designers to spend less time extracting 2D files. Output of orthographics with annotation applied for various disciplines, as well as dimensioning, label placement and more is achieved through the application's ability to quickly read the 3D model information and transpose that to the orthographic drawing, saving designers time and reducing errors.

Simple Configuration Setting Increases Legibility

OpenPlant Orthographics Manager allows users to automatically create single/double line drawing output through a simple configuration setting for the same model, enabling line display to be controlled through pipe size, increasing legibility on highly detailed drawings.

Streamlined Interface to Better Manage Annotation Options

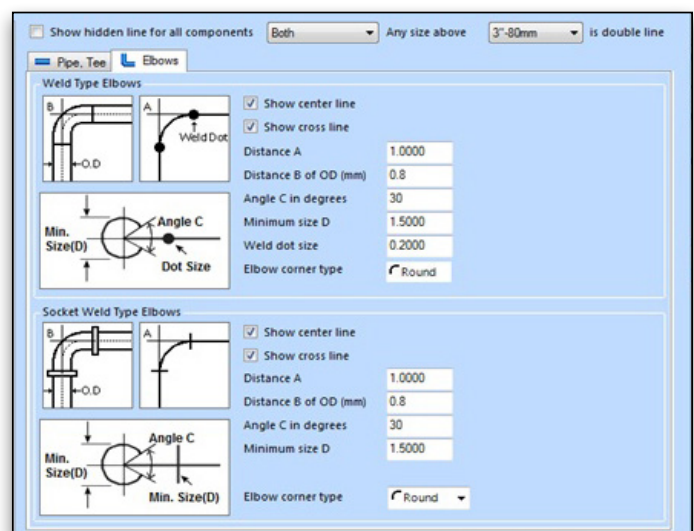
OpenPlant Orthographics Manager provides a single interface to reduce the challenges of working with multiple interfaces to manage annotations for various disciplines such as piping, equipment, HVAC, cable tray, and structural. This eases the task of managing annotation options and keeps track of project configurations for better capture of project settings and control of drawing output.

2D Views and Clipping Planes for Management of Multiple Drawing Views

OpenPlant Orthographics Manager reduces the complexity in defining and managing 2D views for multiple drawing views. Designers can interactively select the required clipping sections and add multiple views for definition files, with the ability to change view scale and rotation, saving time and increasing quality.

Optimal Label Placement for Faster Production and Legibility

OpenPlant Orthographics Manager's white space search algorithm quickly finds free spaces in general arrangement drawings for labeling of various design components, such as instruments, supports, nozzles, reducers, and line numbers. This optimizes legibility, eliminating markups and drawing rework, and reduces output time from hours to minutes.



Intuitive user interface offers a variety of project and configuration settings

Integration with ProjectWise for Improved Project Collaboration

OpenPlant Orthographics Manager integrates with ProjectWise, the only project collaboration and information management software developed explicitly for the design and construction of architecture, engineering, construction, and operations (AECO) of infrastructure projects. The integration enables a connection to any ProjectWise repository to directly download models and upload drawings. Users can quickly find and share information without having to send files via email or distribute through file transfer networks saving time and overall costs.

System Requirements

Refer to the 'Requirements' section of the OpenPlant Orthographics Manager ReadMe file:

www.bentley.com/OpenPlantOrthographics_Manager-Spec

Find out about Bentley at: www.bentley.com

Contact Bentley

1-800-BENTLEY (1-800-236-8539)
Outside the US +1 610-458-5000

Global Office Listings

www.bentley.com/contact

OpenPlant Orthographics Manager V8i (SELECTseries 5) At-A-Glance

Increased Productivity

- Easy to create 2D piping general arrangement drawings
- Ability to regenerate drawings with different annotation and labeling options, providing rapid project configuration

Multiple Project Configurations

- Works with different project units (imperial/metric)
- Configuration settings are saved to a project setting file and can be reloaded to maintain existing drawing conditions

Single/Double Line Drawing Output

- Allows user to create single/double line drawing output
- Line display can be controlled through pipe size

Built-in Reports

- Available for pipe, support, equipment, and instrument lists

2D Free Space Search and Optimization

- Enhanced algorithm finds free spaces in general arrangement drawings for the optimal placement of labels
- Avoids interference of the label (e.g. text string and leaders) with other text or geometry in the drawing
- Gives ability to control interference through user interface generation option

Labeling Priority/Control

- Ability to set priority of label (pipe, control valves, supports) in the drawing to avoid overlapping interference on highly detailed drawings
- Effectively and efficiently uses the space around a tagged item
 - » internal density
 - » boundary area

Multi-views and Composite view

- Supports multiple views of 3D design to create composite drawings
- Ability to interactively select desired clipping sections

Hidden Line Option

- Hidden line drawings for 3D models can be controlled through on/off settings

- Various options are available to control hidden line output
 - » Pipe (single/double line display with industry standard 2D symbols)
 - » Elbow (Weld/SW and THD type), Tee
 - » Option to show centerlines

Drawing Symbolology Options

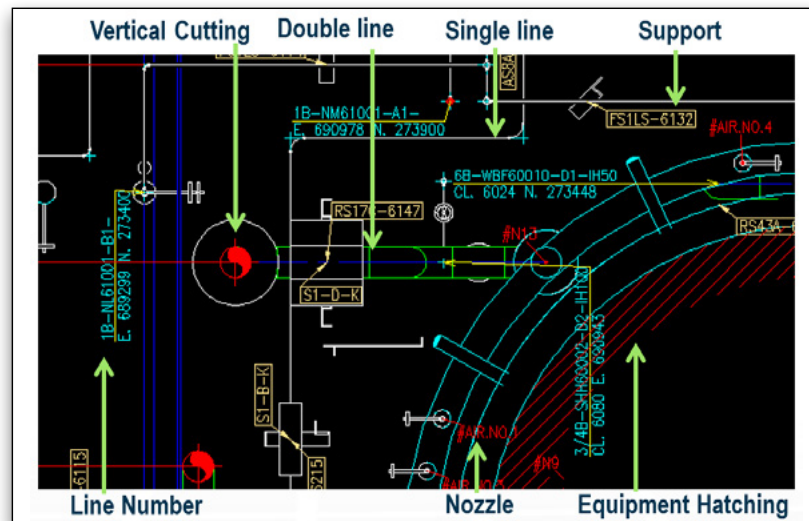
- Level, dimension, etc., options to set up MicroStation symbology
- Annotation Option
 - » Inside/Outside annotation
 - » Pipeline, instruments, supports, nozzles, equipment, structure, and valves
 - » Flow-mark, equipment hatching, slope mark, etc.
- Distance/Area Option
 - » Switching inside/outside annotation
- Charts
 - » Revision history
 - » Nozzle list
 - » Supports list
- Other Options
 - » Border, view data (match line, volume, coordinate)
 - » Key plan
 - » Grid references
 - » Drawing output scale
 - » Customer standard title block, north arrow

Runtime Options

- Output unit (metric/inch-feet)
- Placement priority of inside annotations
- Free space searching density (sparse/average/dense mode)
- Free space searching boundary (fast/middle/detail mode)
- Annotation filtering options

OpenPlant Orthographics Manager V8i Output

- 2D hidden line MicroStation output (.DGN) with dimensions and annotations



OpenPlant Orthographics Manager sample output.