

---

# OpenSite<sup>®</sup>

## 10 Easy Steps to a Complex Design



**Bentley<sup>®</sup>**



---

# EVERY SITE IS DIFFERENT

## BUT THAT DOESN'T MEAN SITE DESIGN SHOULD BE DIFFICULT

Site design comes with many challenges and each project comes with its own unique set of obstacles. You need a solution that helps you overcome these obstacles faster and easier so you can take a project from concept to production more efficiently, accurately, and profitably than ever before.

---

# YOUR BIGGEST SITE DESIGN CHALLENGES

## YOU CAN THINK FASTER THAN YOU CAN DRAW, AND THAT'S A PROBLEM

### Site design is lengthy and time consuming

It typically takes a significant amount of time, effort, and resources to complete site design projects. It is not uncommon to do multiple iterations of a design before finding the one that is right, only to discover your time was wasted when you do not win the bid. Investing too much time and effort on projects is frustrating when you do win the work, but it is even more frustrating when you do not.

### Understand risks

Understanding the finer details of your site will help you make more informed decisions about the suitability of a design. How will your site drain? How will you move stormwater? How will you work with a pond? How much cut, fill, import, export do you need? How does geotechnical impact your site? If these questions aren't answered, your site won't work, which impacts the success of the project, your reputation, and ultimately your bottom line.

### Inefficient CAD workflows

One of the biggest challenges in site design is the inefficient workflow most CAD products deliver. When you are tight for time, you need to maximize your productivity and take a concept to plan production, fast! Using multiple software products for different parts of the process increases the chance of errors, hinders team collaboration, and delays project deliverables.

### 2D limitations

When designing a site, it is not just about a 2D design. The world is 3D, so site design should not be any different. It is important to see the details so you can clearly communicate the value to stakeholders. What will your site look like? Will it fit in with the surrounding environment? Does it meet needs and expectations? Presenting your design in 3D makes it easier for you to answer these questions for the community and your stakeholders and to secure support for your project.



---

# INTRODUCING OPENSITE

## TACKLE THE MOST COMPLEX SITE DESIGNS WITH EASE

Whether you are an engineer or land developer, OpenSite is proven to save you time and money, even on the toughest of designs.

### **Purpose-built site design software**

Streamline workflows, improve efficiencies, and complete projects sooner with OpenSite's business and design tools built specifically for site design. Everything you need is in one place, so you no longer have to jump between different applications to complete tasks or use software that isn't fit for purpose.

### **Create and optimize multiple design scenarios in days, not weeks**

Run thousands of design iterations at the click of a button using OpenSite's grading solver to find the best cost of construction based on your requirements. Identify risks early in the conceptual phase and make informed decisions, fast.

### **No CAD Specialist? No problem**

You don't have to be a CAD expert to use OpenSite. Anyone can use it; you just have to know what it is you want to design. Do you want to create a retail facility with five hundred parking spaces and a few driveways? It's so fast, you can do it in minutes.

### **Bring your design to life**

Create stunning, 3D visualizations at any time and on demand to better communicate project value. Choose from high-definition images or videos to show clients and stakeholders exactly what your project will look like.



---

# OPENSITE IN ACTION

## CREATE A COMPLEX CONCEPTUAL DESIGN IN 10 EASY STEPS, AND IN 30 MINUTES

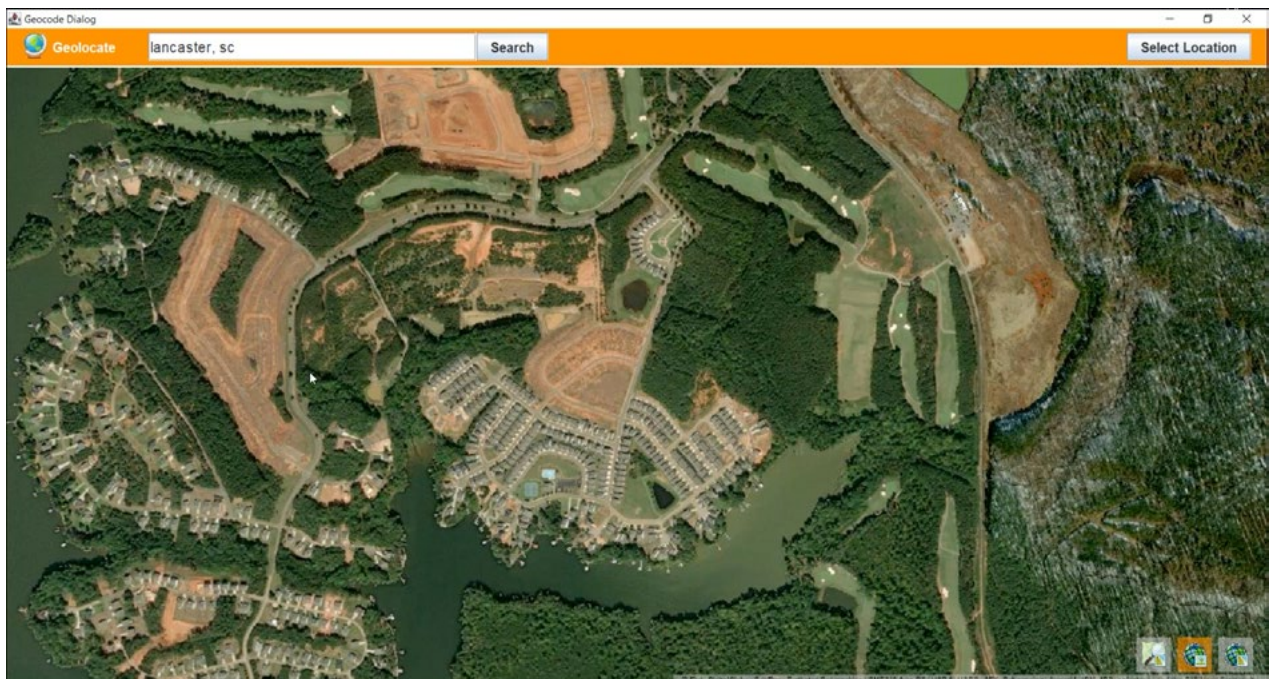
In a recent webinar, OpenSite expert David Settlemyer chose an undeveloped area in Edgewater, South Carolina to demonstrate how to build a complex conceptual design in minutes using OpenSite. The design included 173 parcels, a clubhouse, a golf course, and roadways, and it was completed in just 30 minutes.

Follow along with these 10 easy steps, to find out how that was achieved.

### 1 Import the data

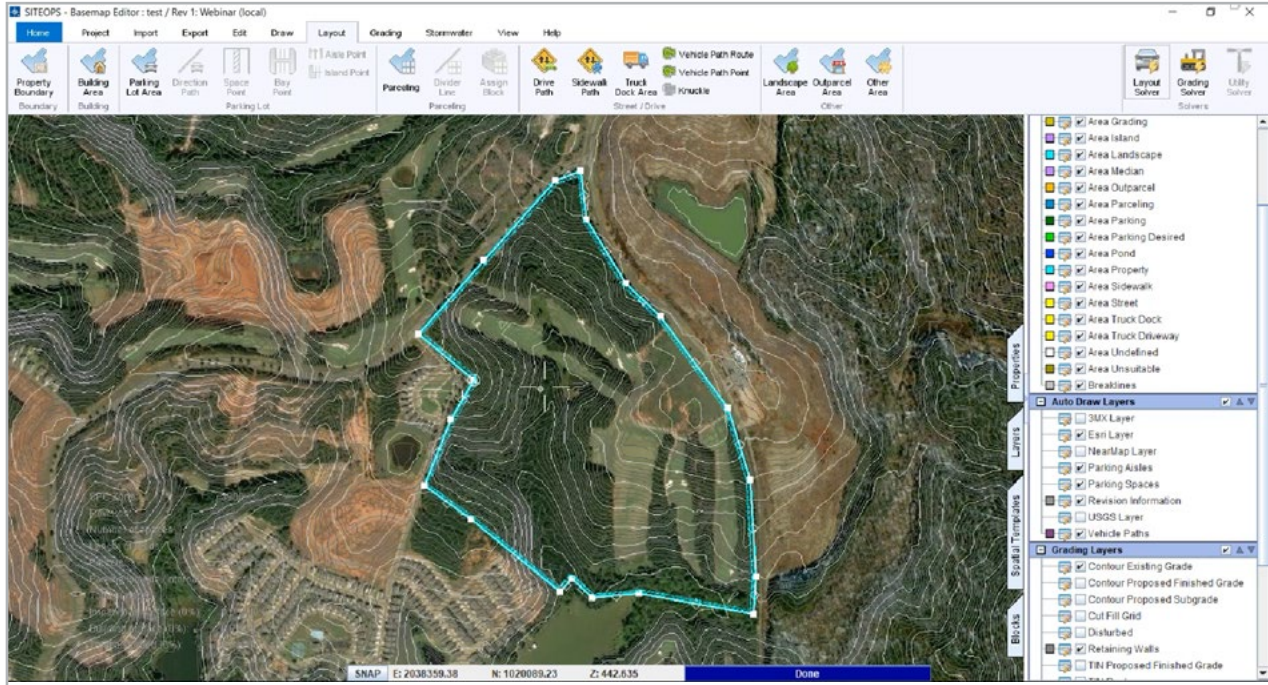
Before you start creating a project, you need to make sure you have as much information as possible to efficiently plan, develop, and finalize site designs.

Start by entering the site location using Geolocate to import data related to your site and use ESRI imagery and topography service to extract terrain information.

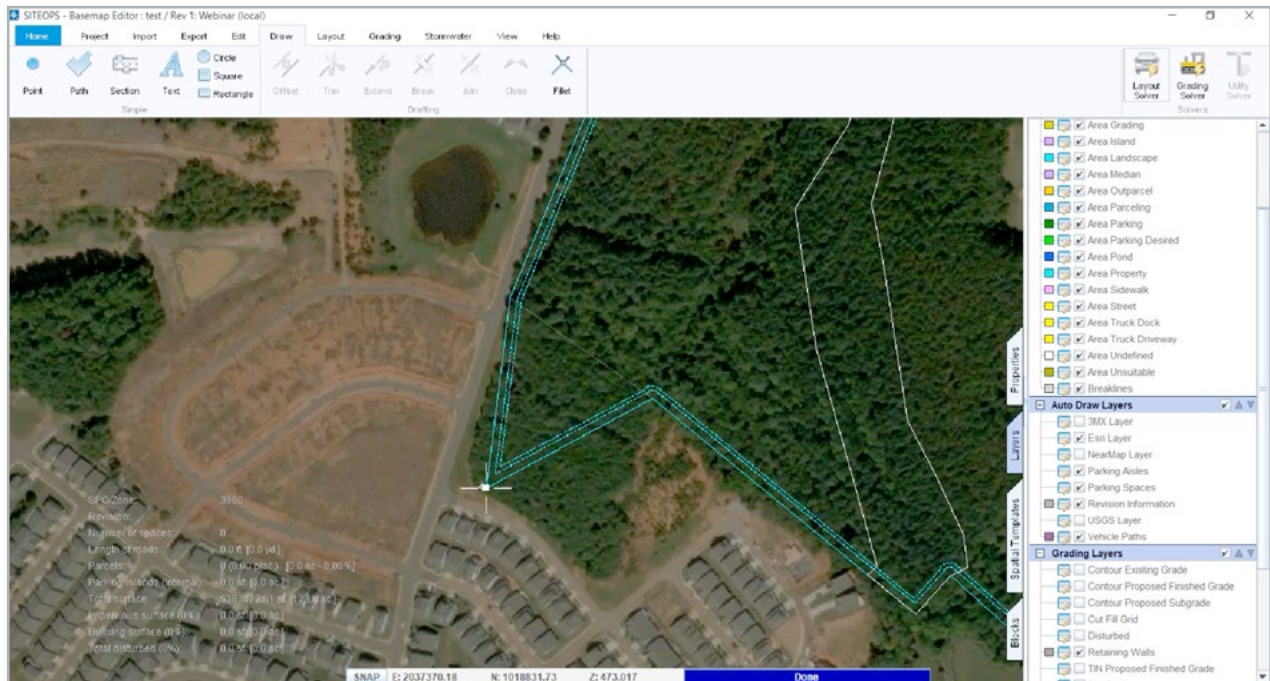


## 2 Create boundary area

Create a boundary area of where you want your site to be by clicking on various points within the map to draw your layout. The blue line negates the boundary of the site, and you can turn contours on and off depending on your preferences.



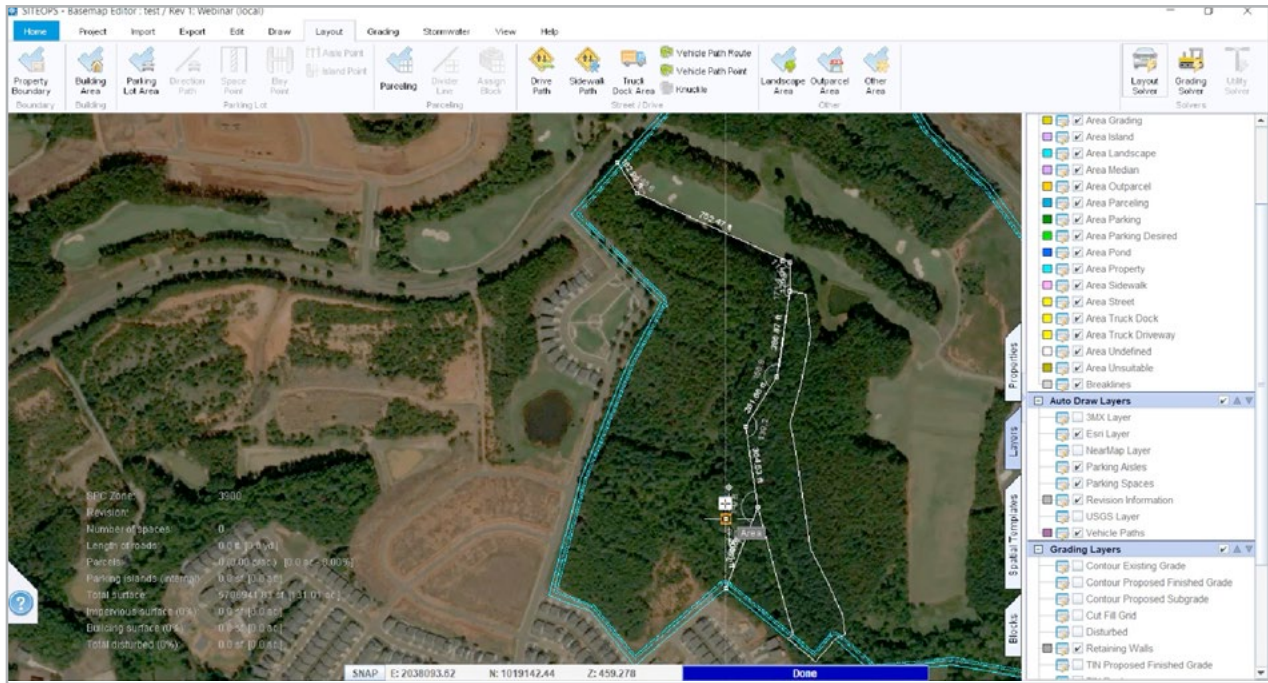
Need to make a change? Easily make edits to the boundary as needed by dragging the lines to where you want them to be.



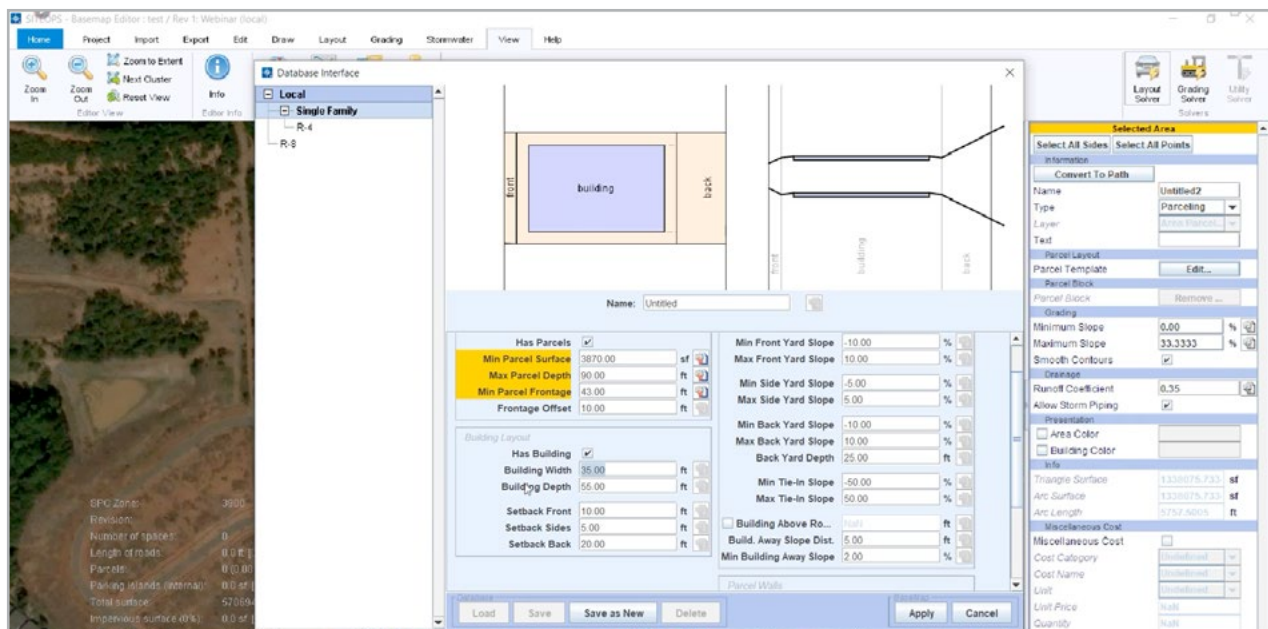
# 3

## Create parcel limits

Insert a parcel area and draw your parcel in the same way as creating a boundary.

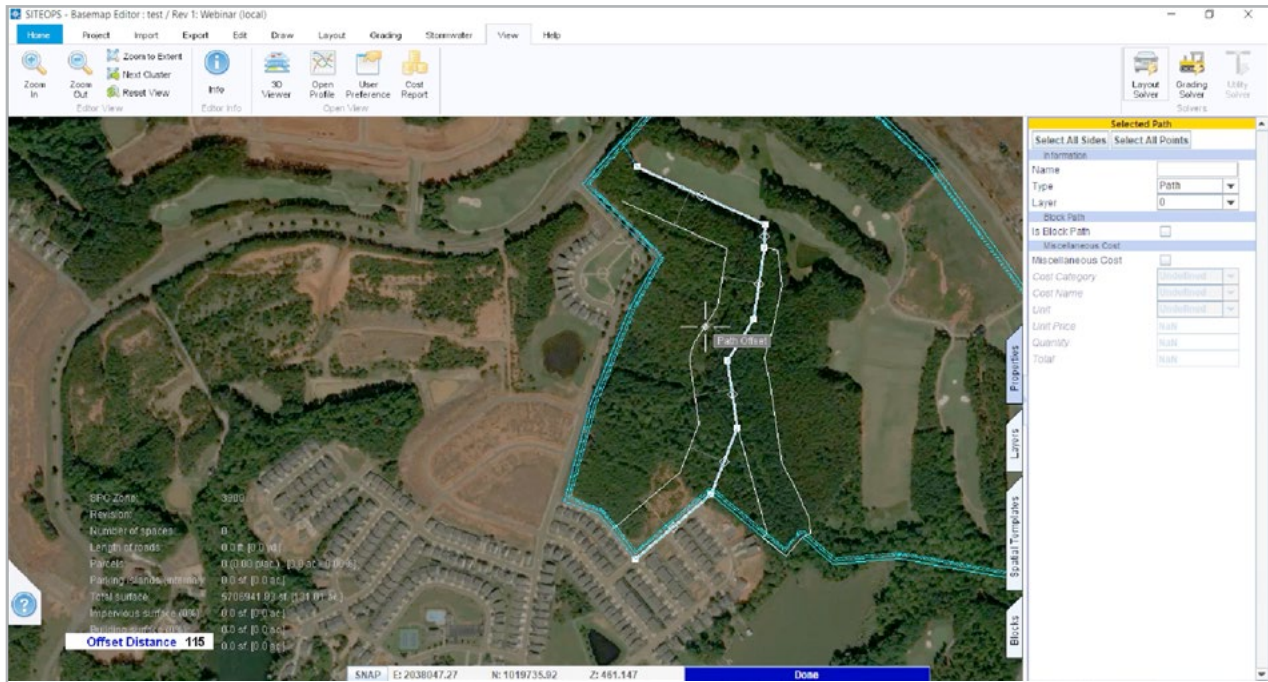


Adjust parcel requirements in line with your desired specifications.

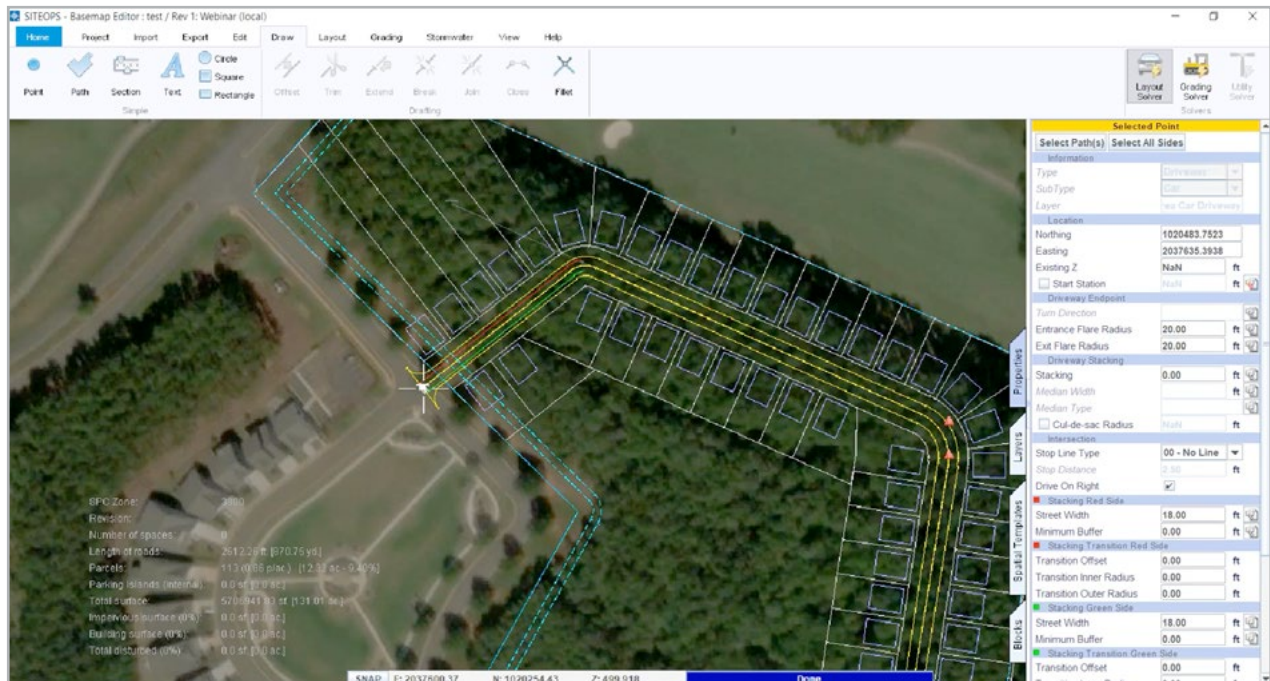


# 4 Create driveways

Use the chaining tool to create center line of roadway by offsetting outer parcel limit of 150 feet.



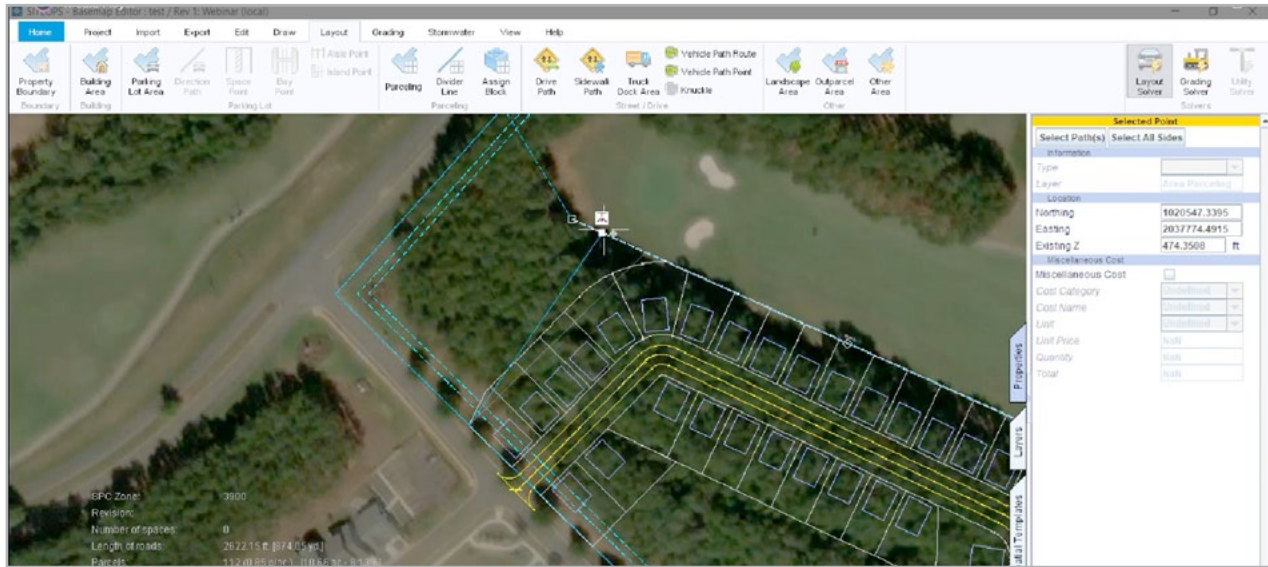
Connect the road to any existing roads. The software will automatically adjust the size of the plots.



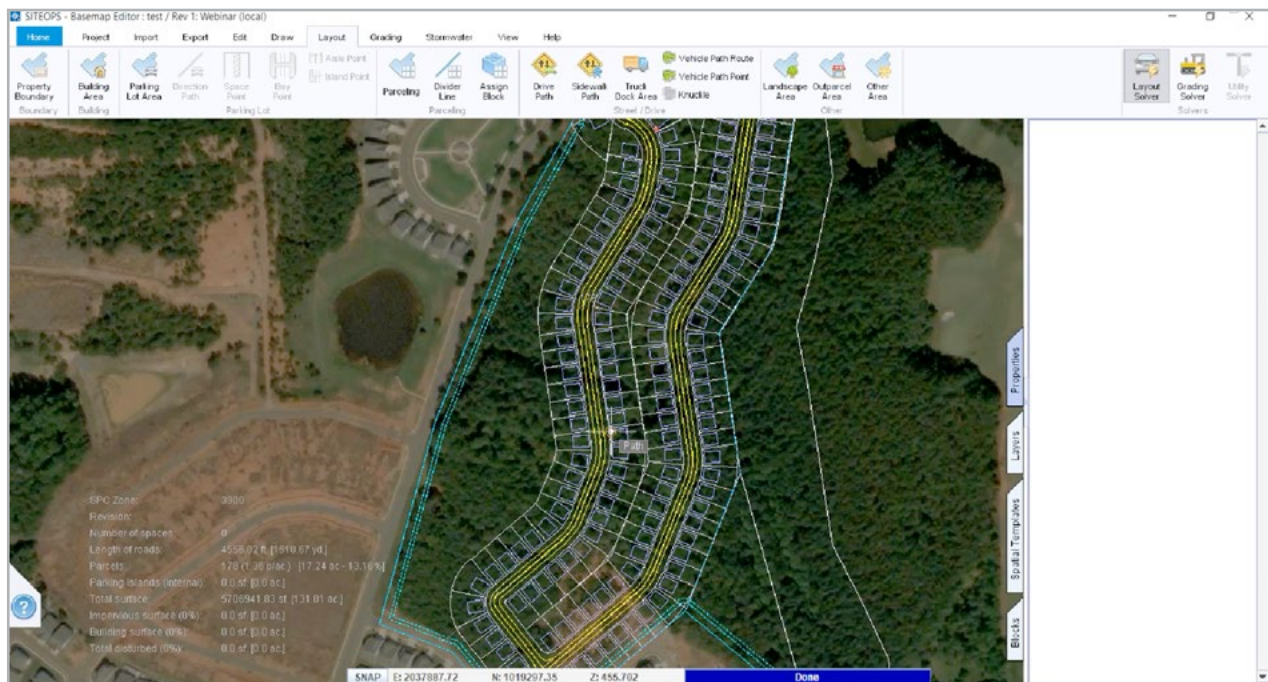
Re-assign chained path as intelligent roadway center line. Parcels will be automatically created once roadway has been assigned.

# 5 Make edits on the fly

Need to reduce the size of the plot due to excessive land, make it bigger, or insert an elbow? Not a problem. You are in complete control; just click and drag the new boundary to where you want it to be, and the design will re-adjust automatically in real time.



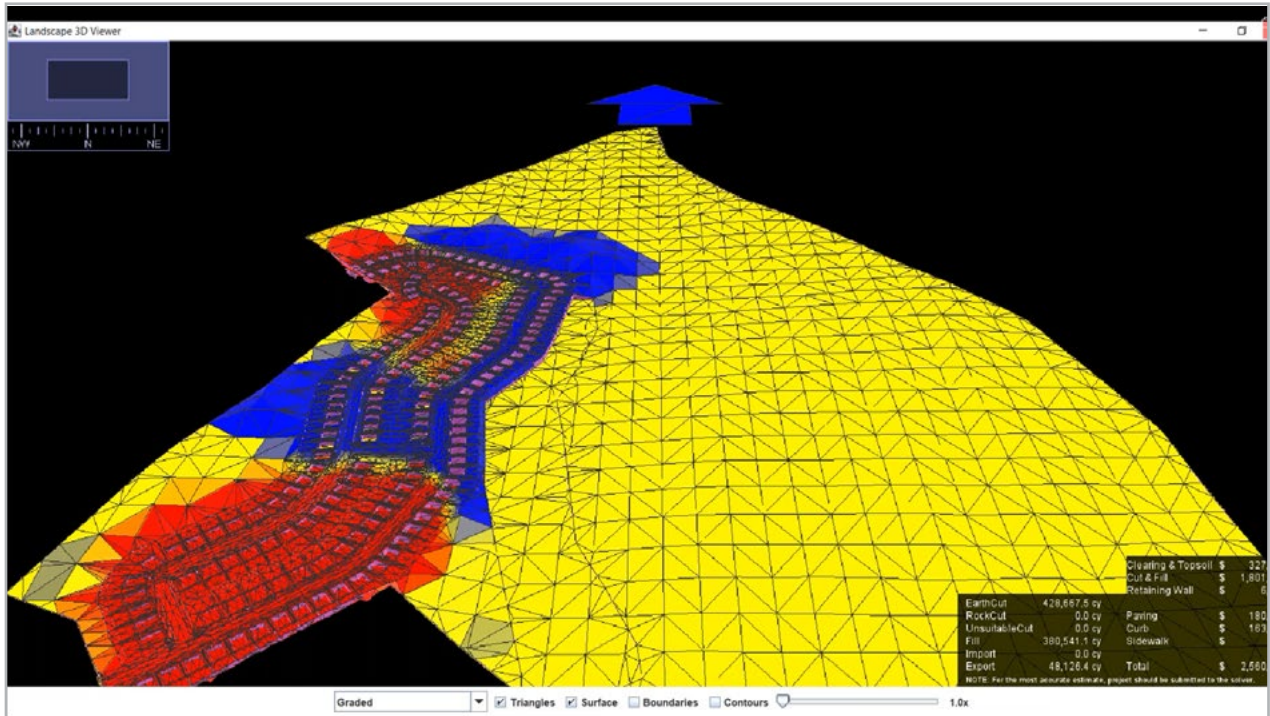
You can also add additional parcels as needed. We created 173 parcels in just 10-15 minutes. **Imagine how little time it would take to create 1000 parcels!**



# 6

## Grade the site

Click to grade the project. Automated grading allows you to see what is and isn't working early and creates design alternatives based on the best cost of construction, so you know exactly how much work is required and how much the project is going to cost you.

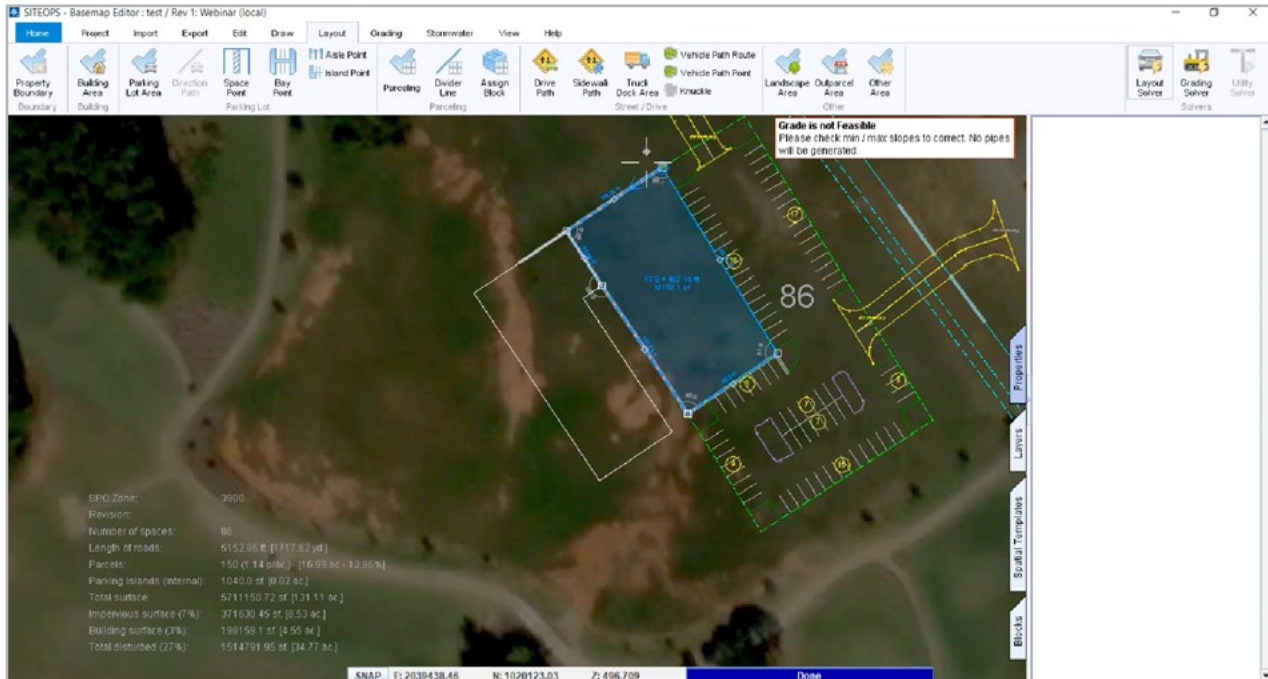


Red = Amount of cut required

Blue = Amount of fill required

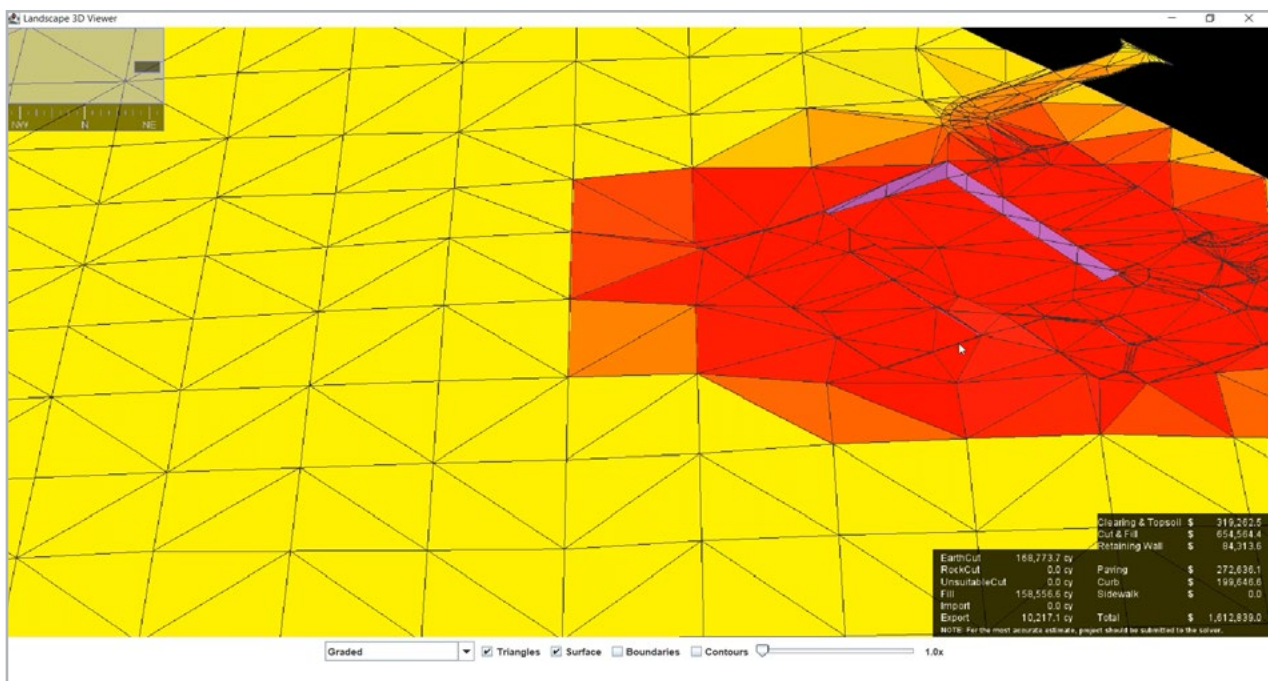
## 7 Combine smart elements

Add additional elements as needed. In this example, a clubhouse, parking lot, and driveways were also created.



## 8 Grade again

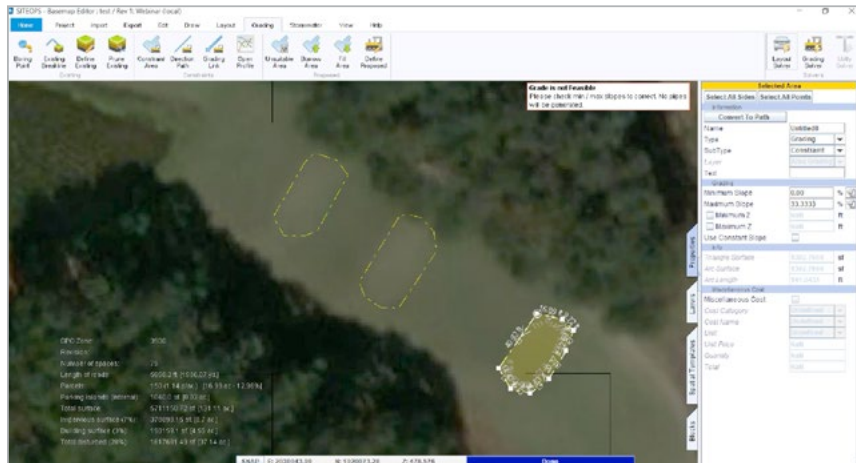
Click to grade. The software tells you exactly how much cut/fill is required and the total cost of the design.



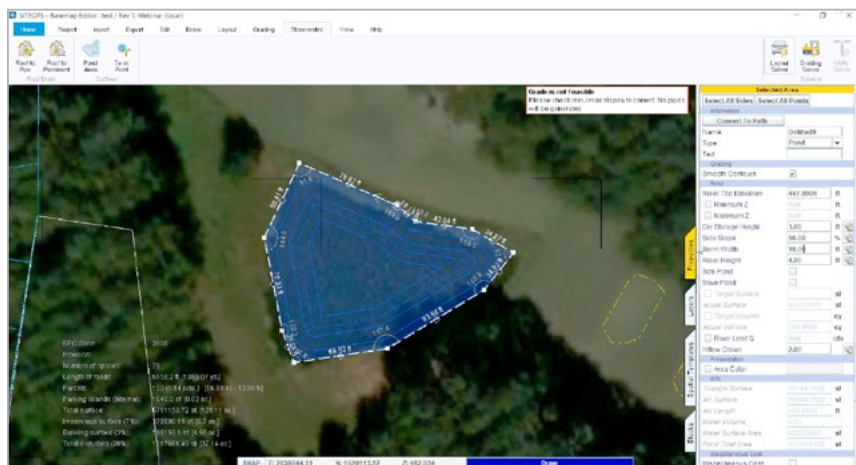
# 9 Create golf course elements

Draw the outline of any golf course elements, including tee boxes, ponds, sand traps, green areas, or 3-tiered slopes, and customize as required.

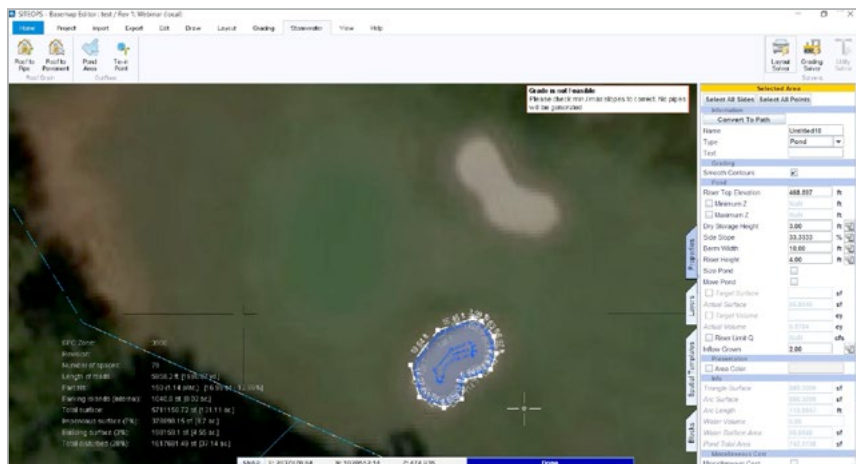
Tee boxes:



Pond:

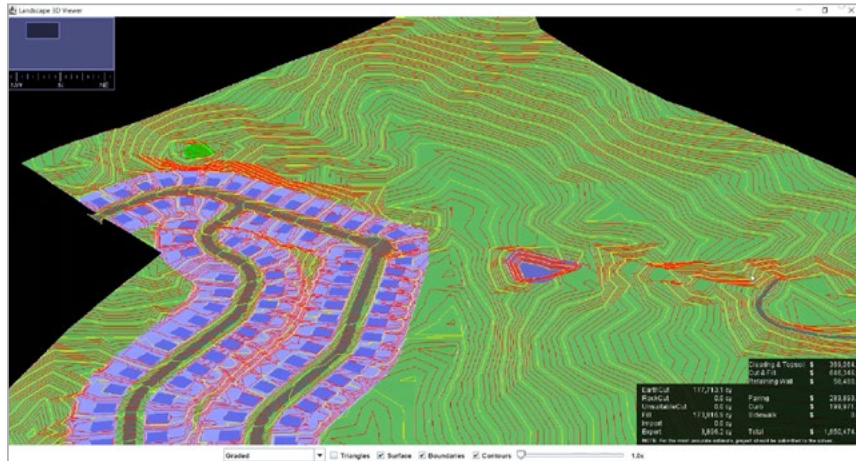


Sand trap:

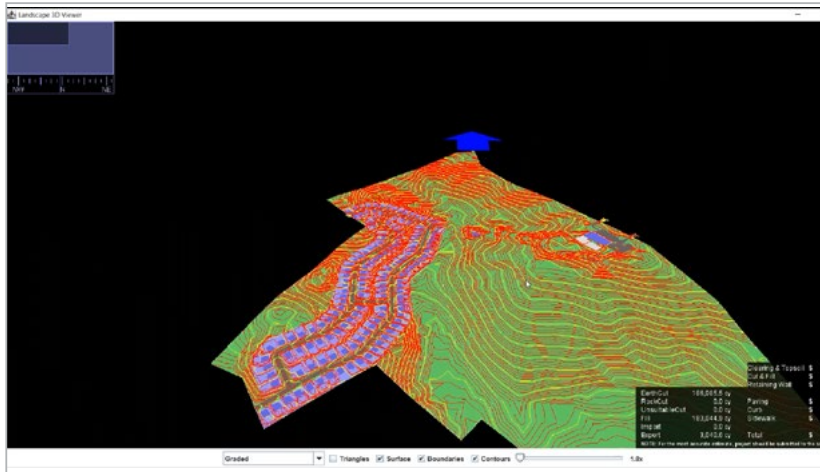


# 10 Grade all elements at once

Once all your design elements have been created, click to grade. Your entire design will be graded again with an updated cost of construction and autogenerated budget.



What would typically take days has been completed in around 30 minutes!



---

# GET STARTED

## INCREASE EFFICIENCY, ACCURACY, AND PROFITABILITY

Site development is complicated, but your software doesn't have to be. OpenSite is the only true site design software – supporting all aspects of site design in one application so you can easily meet requirements on time, every time.

Want to learn more?

[Watch the full webinar here](#)

Ready to take on the challenge?

[Shop OpenSite today](#)

© 2023 Bentley Systems, Incorporated. Bentley, the Bentley logo, OpenSite, and Virtuosity are either registered or unregistered trademarks or service marks of Bentley Systems, Incorporated or one of its direct or indirect wholly owned subsidiaries. Other brands and product names are trademarks of their respective owners. 06/23

**Bentley®**

