

A photograph of railway tracks curving into the distance. In the background, a train is visible on the tracks, with its headlights on. The scene is set in an urban or industrial area with buildings and structures visible in the background. The image is split into two vertical panels: the left panel is darker and serves as a background for the text, while the right panel shows a clearer view of the tracks and the train.

CONCEPTUALIZE AND ANALYZE DESIGN
OPTIONS FOR RAILWAY PROJECTS
IN A MATTER OF HOURS!

OPENRAIL™ CONCEPTSTATION

Bentley®

WELCOME TO THE **OPENRAIL CONCEPTSTATION** **PRODUCT TOUR GUIDE**

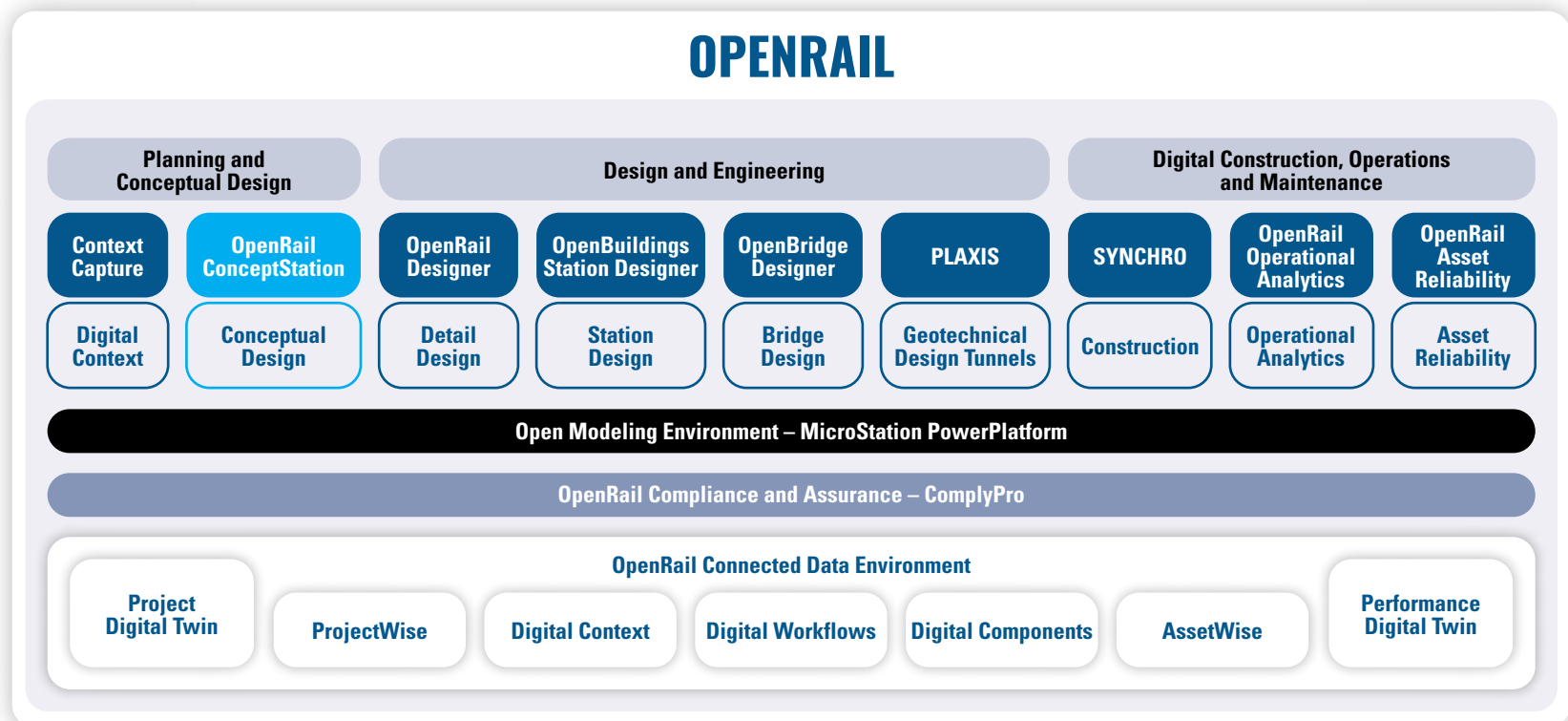
This e-book provides with a look into how OpenRail ConceptStation supports the evolving rail and transit industry requirements that help you **connect the data, people, workflows, and ideas** necessary to support today's railway infrastructure projects.



The e-book also includes links to videos that illustrate how the software addresses your critical business issues. If you have questions, or need more information, please visit <https://www.bentley.com/software/openrail-conceptstation/> or call our OpenRail specialist **1 800 236 8539**.

OPENRAIL CONCEPTSTATION IS A MEMBER OF THE BROADER OPENRAIL FAMILY FROM BENTLEY SYSTEMS

OpenRail **Connected Data Environment**, with digital workflow services, facilitates collaboration among distributed engineering teams and different disciplines. In digital workflows, data captured or created for one purpose is accessed by computer programs for other purposes, saving time, minimizing rework, and improving data quality over the asset lifecycle. For example, design information created in OpenRail ConceptStation can be reused in OpenRail Designer and other related software.



SOLVE YOUR **CRITICAL BUSINESS ISSUES**

OpenRail ConceptStation offers rail, electrification, tunnel, and bridge design capabilities, helping rail engineers and designers rapidly determine optimal conceptual designs with real-world data and cost analysis to improve project deliverables.

If you want to accelerate and improve data collection, understand financial implications early, move from idea to 3D faster, and visualize real-world railway track and station layouts in one easy to use application, then you're ready for OpenRail ConceptStation. **Read on to learn how you can produce conceptual designs in hours, not days.**

EXPLORE MORE >



DATA COLLECTION



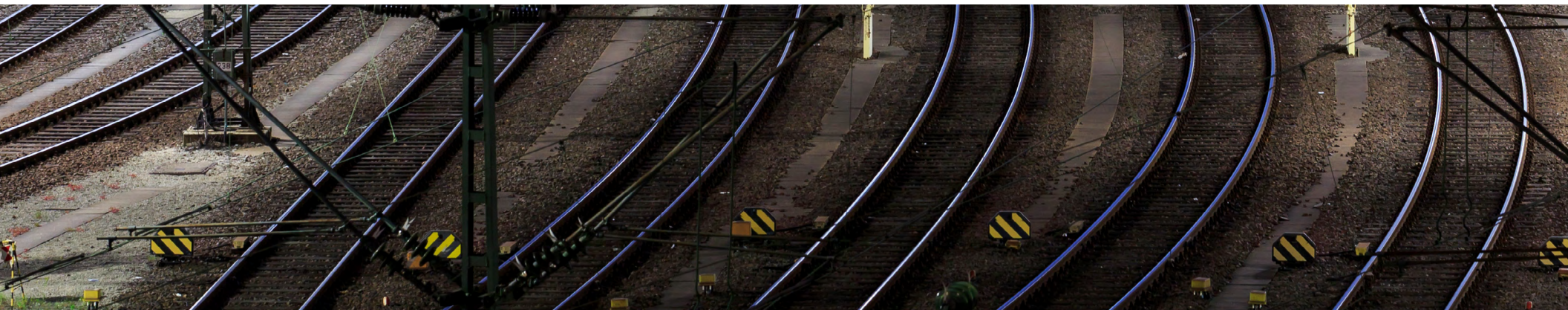
FINANCIAL UNDERSTANDING



IDEA TO 3D



VISUALIZE DESIGNS



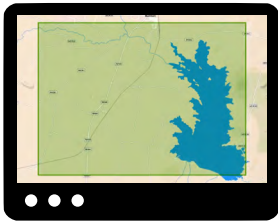


ACCELERATE AND **IMPROVE DATA COLLECTION**

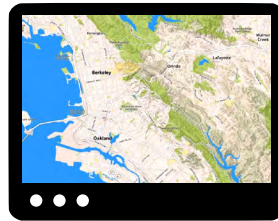
Assemble contextual data to bring real-world conditions to your railway project. With geo-coordination services, you can easily find, download, and integrate data such as terrain data, aerial imagery and geospatial information from a variety of sources to create intelligent 3D models with minimal effort.

The easy-to-use data assembly capabilities helps your organization reduce the time required to locate existing condition data and decrease the overall design schedule.

LEARN MORE BY WATCHING THE VIDEOS BELOW >



**OPENRAIL CONCEPTSTATION,
BING MAPS**



**GEO-COORDINATION
AND TERRAINS**

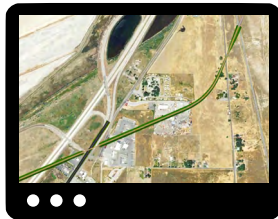


UNDERSTAND **FINANCIAL IMPLICATIONS EARLY**

Rapidly generate multiple conceptual designs with associated project costs for better decision making. As design modifications are made, project estimates will dynamically update so you can identify high-cost items and potential risks in the preliminary design phase.

Your organization can conduct interactive discussions with stakeholders to quickly consider and visualize different scenarios to determine the best rail track, yard and station design in real-world context. You'll win more business by generating better, more cost-effective designs in less time than your competition.

LEARN MORE BY WATCHING THE VIDEO BELOW >



**QUANTITIES AND
CROSS SECTIONS**



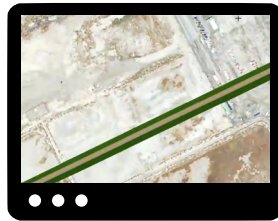
MOVE FROM IDEA TO **3D FASTER THAN EVER**

Simplify 3D modeling with easy-to-use engineering sketching capabilities to quickly conceptualize rail network infrastructure. You can quickly layout railway tracks, station, bridges, tunnels, overhead line electrification systems, signals, and complex interchanges while adhering to engineering principles and standards.

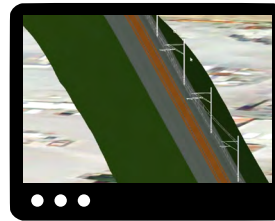
LEARN MORE BY WATCHING THE VIDEOS BELOW >



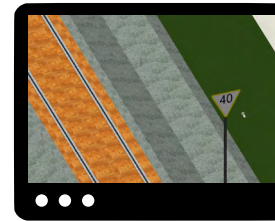
**TRACK DESIGN, BRIDGE
CLEARANCE AND TUNNELS**



**YARD/STATION, TURNOUTS
AND MULTITRACK DESIGN**



**OVERHEAD LINE
ELECTRIFICATION**



SIGNAL PLACEMENT

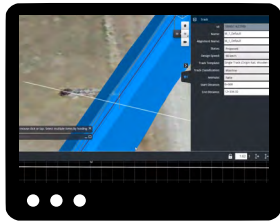


VISUALIZE AND ANALYZE **DESIGNS**

Experience your designs in real time with constraint-driven templates, a context sensitive intuitive interface, and dynamic 3D modeling. Visualize the design at any time and on demand within the modeling workflow, thus, equipping you with invaluable insights into each design option for better evaluation and planning decisions. No translations, software, or special workflow process is needed.

Easily create and communicate complex project concepts to stakeholders with lifelike visuals and cost analysis to more quickly gain project approvals.

LEARN MORE BY WATCHING THE VIDEO BELOW >



VISUALIZATION

OPENRAIL CONCEPTSTATION

Rapid Conceptual Design

See for yourself how you can rapidly deliver optimized conceptual rail designs at lower cost and less risk.

Get started with OpenRail ConceptStation today.

[REVIEW PRODUCT CAPABILITIES >](#)

[REQUEST A TRIAL >](#)

1-800-BENTLEY (1 800 236 8539)

© 2023 Bentley Systems, Incorporated. Bentley, the Bentley logo, OpenRail, OpenRail ConceptStation, and OpenRail Designer, are either registered or unregistered trademarks or service marks of Bentley Systems, Incorporated or one of its direct or indirect wholly owned subsidiaries. Other brands and product names are trademarks of their respective owners. 05/19



Bentley®