



Bentley Training Partner Program

Empowering Professionals and Students for Careers in Infrastructure

In today's global economy, training for developing skills is essential to increase the efficiency and productivity of the infrastructure professions. An adequately skilled workforce is the biggest asset for any company, but many organizations are challenged in this area. Simply having access to the latest technology will not yield the best possible results, unless workers can also use that technology to its full potential.

The Bentley Training Partners program leverages the powerful collaboration between Bentley and their authorized Training Partners to create optimal learning outcomes for users. Professionals and students alike benefit from sharpening their technology skills, and they can optimize their use of Bentley's software with hands-on product training and guidance – so they are better prepared to tackle the infrastructure challenges of today and tomorrow.

Bentley Training Partners provide continuous learning opportunities for professionals, supporting career growth and the ability to adapt to the ever-changing needs of both an organization and the industry in which it works.

Bentley Training Partners also help prepare students with the technology skills needed by industry, so they are better equipped for careers as the world's future infrastructure professionals.

Program Benefits

- ◆ Training completion certificates, validated by Bentley, at the end of courses
- ◆ Courses attuned to local needs and trends
- ◆ Instructors experienced in delivering tailored offerings
- ◆ Training Partners adept at offering training the way you prefer: either in a physical classroom or virtual environment (live or on-demand)
- ◆ Quality product training ensures your projects will be delivered in a shorter timeframe, with improved results

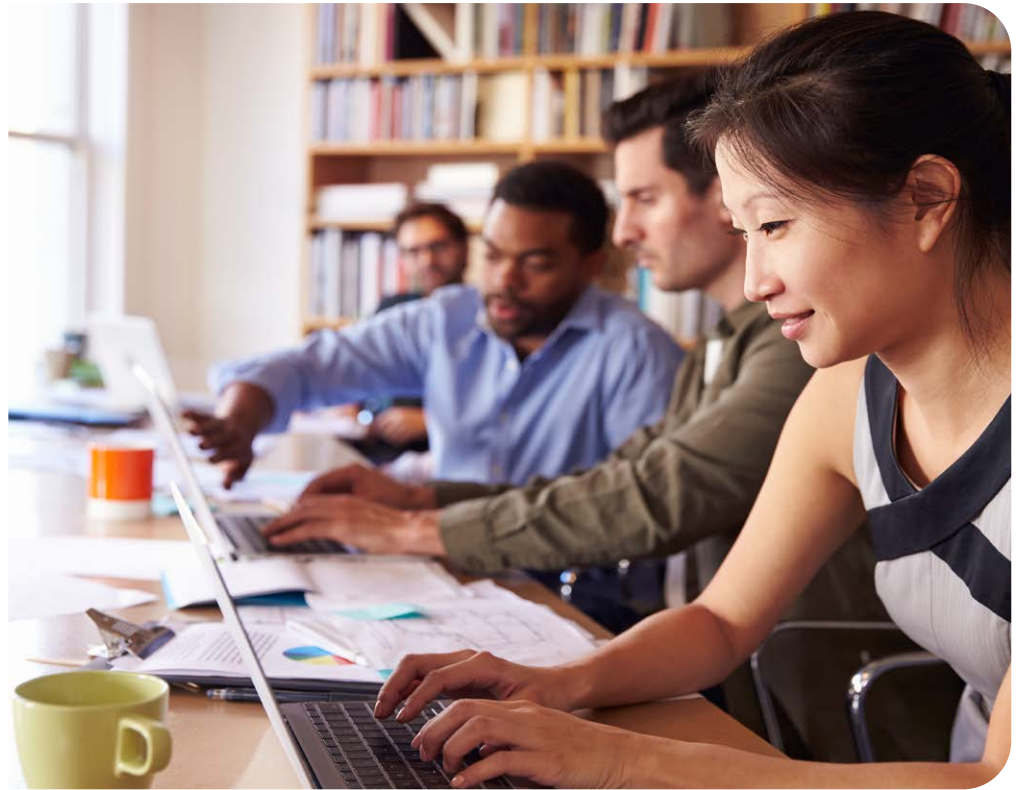
Your Opportunity

- ◆ **Gain the technology skills** required by the industry to advance your career.
- ◆ **Distinguish yourself** as a job-ready resource to increase your opportunities.
- ◆ **Demonstrate your technology skills** by earning a certificate of accomplishment for each completed course.
- ◆ **Prove the ROI of your investment** in technology training with better project outcomes.
- ◆ **Become a leader and expert** in your field.

For additional information about the Bentley Training Partner Program, visit <https://www.bentley.com/training-partners/listing/>



Bentley[®]
Advancing Infrastructure



About Bentley Systems, Incorporated

Bentley Systems (Nasdaq: BSY) is the *infrastructure engineering software* company. We provide innovative software to advance the world's infrastructure – sustaining both the global economy and environment. Our industry-leading software solutions are used by professionals, and organizations of every size, for the design, construction, and operations of roads and bridges, rail and transit, water and wastewater, public works and utilities, buildings and campuses, mining, and industrial facilities. Our offerings, powered by the *iTwin* Platform for infrastructure digital twins, include *MicroStation* and *Bentley Open* applications for modeling and simulation, *Seequent's* software for geoprofessionals, and *Bentley Infrastructure Cloud* encompassing *ProjectWise* for project delivery, *SYNCHRO* for construction management, and *AssetWise* for asset operations. Bentley Systems' 5,000 colleagues generate annual revenues of more than \$1 billion in 194 countries.

For more information about Bentley, visit us at <https://www.bentley.com/>.

For additional information about the Bentley Training Partner Program, visit <https://www.bentley.com/training-partners/listing/>

