

Bentley

Michael Miller

Vice President of Engineering
Services, Exo



Illuminate
2025
Atlanta

Bentley

Otto Lynch

VP, Power Line Systems



Illuminate
2025
Atlanta

Breathing New Life into Legacy Assets with Digital Twins: *Revitalizing 100-year-old electrical towers through modern intelligence*



Illuminate
2025
Atlanta

Bentley®

Ohio Falls Crossing

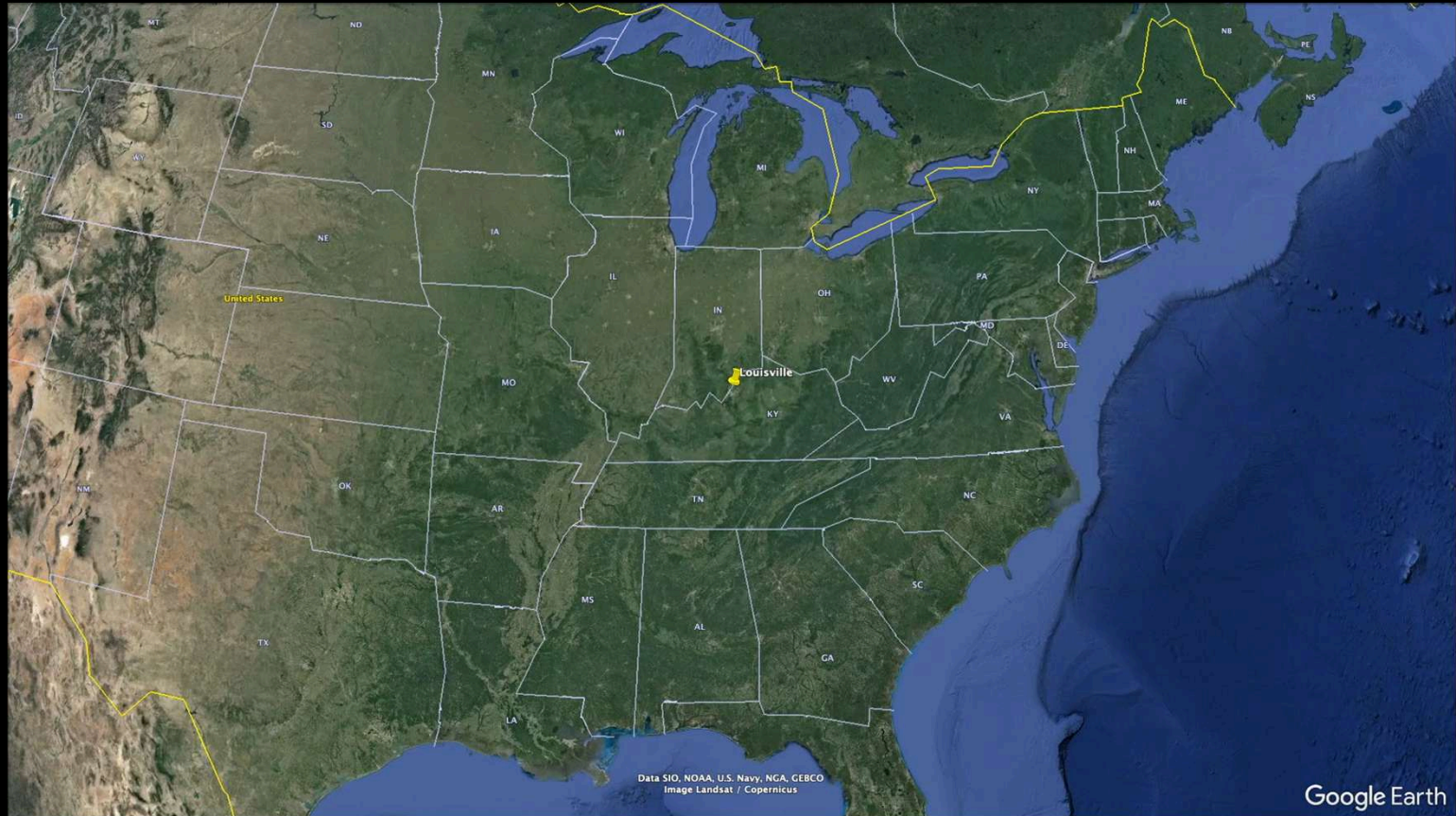
138kV Transmission Line

Exo Inspection

- Significant Corrosion
- No Drawings remained
- 1927 Construction

Exo assessment

- Create 3D Structural Models with derated capacity
- Apply load from high tension wires
- Determine Reliability





Selection filter: Photos [v] Select Associated Photos



DJI_2025060412...

DJI_2025060412...

DJI_2025060412...

DJI_2025060412...

DJI_2025060412...

DJI_2025060412...

DJI_2025060412...

DJI_2025060412...

DJI_2025060412...



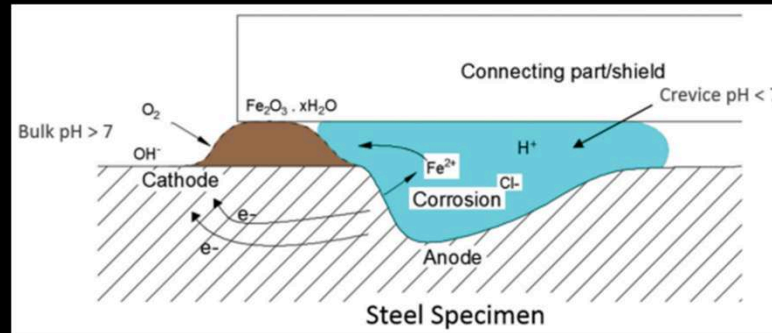
Wind Loading using Bentley's PLS-CADD software



**Illuminate
2025
Atlanta**

Google Earth
High Voltage, Georgia
2013-01-01 10:00 AM

Crevice Corrosion



Remediation



Prep and Clean

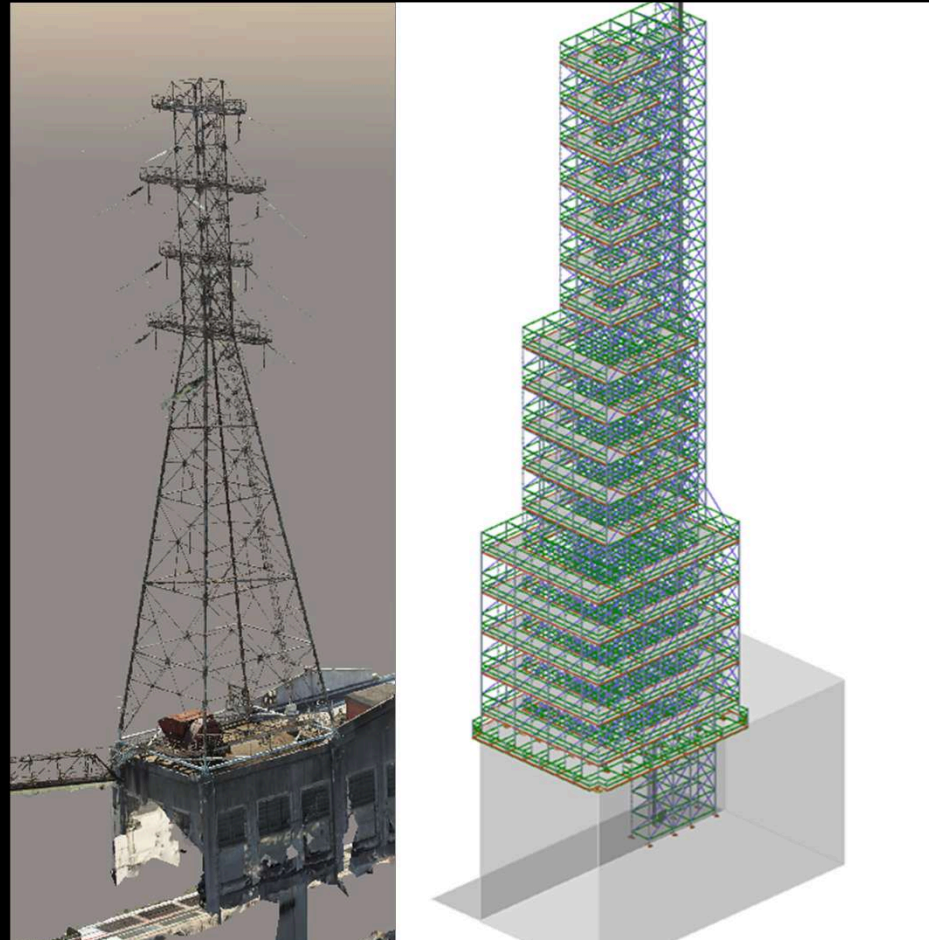


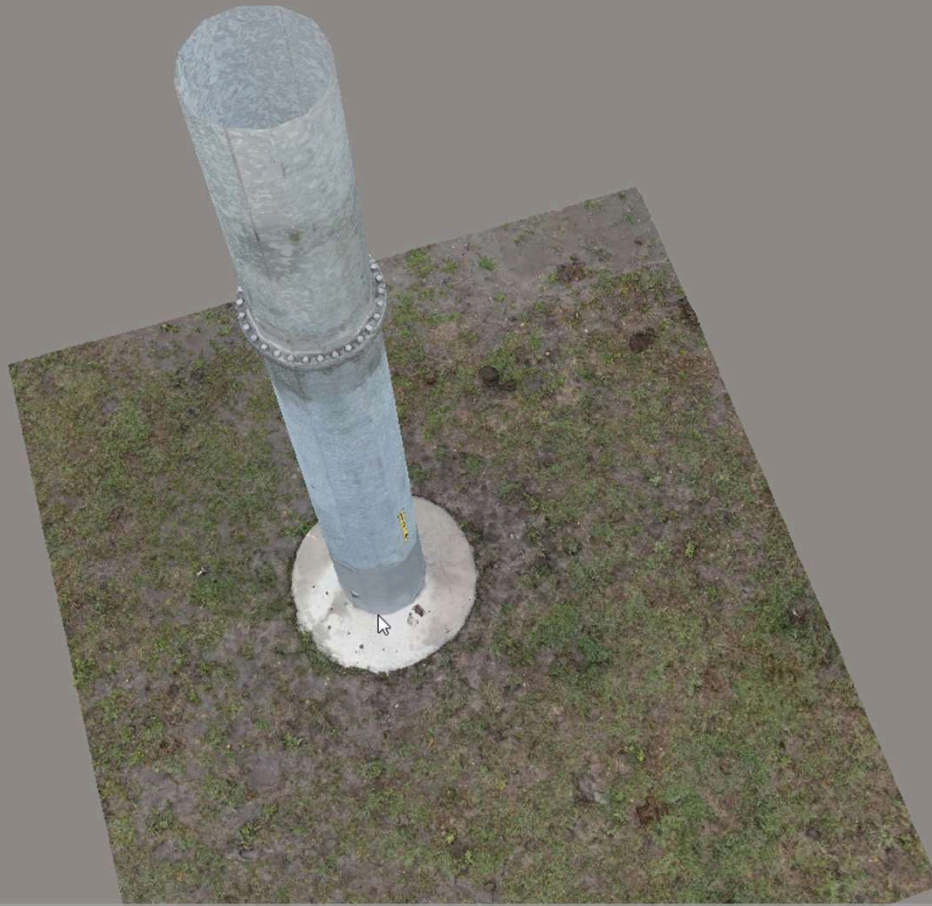
Neutralize and Seal

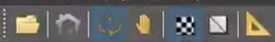


UV Protectant Topcoat

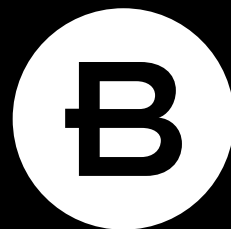
Access with scaffolding







Bentley[®]



Illuminate
2025
Atlanta