



OpenPlant® Isometrics Manager

Generate intelligent isometrics from multiple sources

Piping isometrics are among the most important deliverables from plant models. OpenPlant Isometrics Manager is a flexible, powerful application that runs independent from plant design applications to provide a cost-effective means for non-engineers to quickly create and manage isometrics.

Independent isometrics production increases productivity

OpenPlant Isometrics Manager allows isometrics to be independently produced by document control or other supporting project personnel, freeing piping designers to focus on design activities. By managing isometric production through project-based rules, the software allows users to easily generate isometrics from an OpenPlant-based iModel or other sources using a simplified interface, eliminating the need for a complex design application. It also enables project teams to output in either DGN or DWG formats.

Rapid project startup

Quickly create isometrics styles for each project through the powerful, yet easy-to-use graphical user interface for isometric configuration. This interface eliminates the complexity and extensive time needed in other products that require switches, auxiliary configuration files, and more. Projects can begin faster, run more accurately, and address the needs of each organization more rapidly.

Automated production for higher-quality isometrics

Increase the quality and accuracy of your isometric drawings with OpenPlant Isometrics Manager's ability to extract intelligent isometrics from multiple 3D sources. Generate virtually "no touch" isometrics utilizing the application's whitespace management engine that allows for improved drawing layouts as well as better dimension and label positioning, saving time with clear and legible isometrics. Automatically split isometrics into multiple sheets based on different criteria to quickly generate construction deliverables based on project requirements.

Integrate users and projects to increase collaboration

OpenPlant Isometrics Manager integrates with ProjectWise® to allow finalized isometrics to be posted directly into the document repository with automatic version control. This integration enables team members, regardless of location, to access the most current versions of these contracted deliverables.

The application allows users to improve collaboration, personal productivity, and information sharing by signing in as a connected user and associating files with Connected Projects. Connected users can access personalized learning, communities, notifications, and project information. Connected Projects provide project level reporting, including which users are working

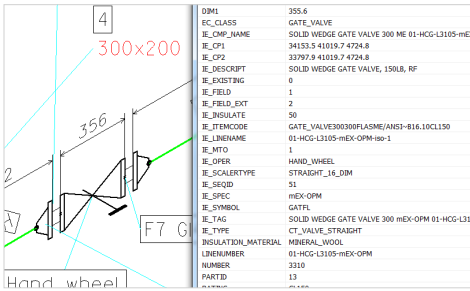
a project, how much time they are spending on a project, and what Bentley applications they are using.

Intelligent isometrics provide useful data for the entire project lifecycle

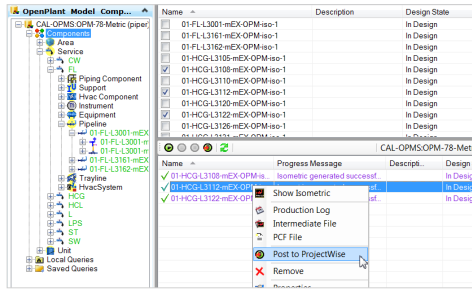
OpenPlant Isometrics Manager automatically creates an intelligent file, which includes the graphics and associated piping data, allowing users to search and query data within these documents without the need for access to the plant design model.

Multiple styles provide fit-for-purpose drawings

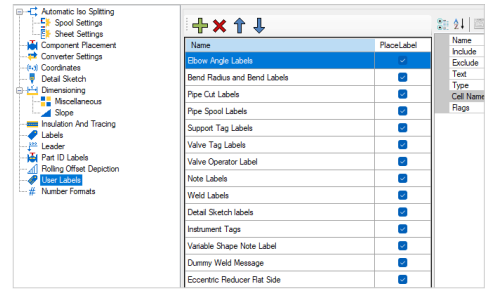
OpenPlant Isometrics Manager provides for the creation of many isometric styles for specific purposes in the project, each with its own set of rules for design status and layout types. The resulting isometric drawings can be placed into their own folder within ProjectWise for versioning and distribution to a globally distributed project team. Delivered styles include As-Built, Check, IFC, Stress, and Tracing. Additional user-defined styles can be created to suit project requirements. ProjectWise provides for remote access, allowing users, such as fabricators, to see the most current information.



OpenPlant Isometrics Manager accesses and manages all information about components in the isometric.



Using a direct connection to ProjectWise provides integral document management through OpenPlant Isometrics Manager.



GUI-driven configuration tools provide simple isometric configuration.

System requirements

OpenPlant Isometrics Manager at-a-glance

Minimum: Windows 11 or 10 (64 bit)/ Windows 11 (24H2) or Windows 10 (21H2), Windows Server 2019, Windows Server 2022 (64 bit) Intel® or AMD® Processor 2.5 GHz or greater, 16 GB memory
Recommended: 32 GB memory

Interoperability

- Generate PCF files to pass data to existing fabrication systems
- Produce isometrics from OpenPlant, AutoPLANT®, and AutoPIPE®
- Create isometric deliverables in DGN or DWG formats
- Works with OpenPlant and AutoPLANT Central Management
- Use a common setup and configuration through ProjectWise managed Workspaces
- Store similar isometrics in a central location
- Navigate between models and isometrics
- Examine components from the same model using different views

Design model component information

- Perform intelligent queries against components to find those with identical information to 3D design models
- View relevant data available in other areas of the design and construction process

Isometric production

- Separate isometric production from piping design applications
- Control isometric generation by status settings
- Generate different isometric production log files

Usability

- Easy-to-use interface designed for non-piping users—no need to understand unclear switches, auxiliary file structures, or settings
- Straightforward query tool to easily search for a specific group of components, such as a line number
- Project-driven drawing output and bill-of-material definitions

Isometrics drawing and style configuration

- Intelligent isometric drawings include graphics and piping data
- Easy-to-configure isometrics styles—no need to remember switches
- User-configurable drawing layouts and reporting
- Simple isometrics symbols creation using MicroStation cells
- Fully configurable bill-of-material layout
- Customized drawing attributes for additional pipeline information

ProjectWise integration

- Manage multiple projects from a single model or data source
- Include metadata with documents
- Save user queries locally or to ProjectWise for team access
- Edit isometric name expression
- Populate ProjectWise document attributes when an isometric drawing is posted to ProjectWise
- Browse element information or specific components or sets of components

Bentley

Find out more at **Bentley.com**
 1.800.BENTLEY (1.800.236.8539)
 Outside the U.S.: +1.610.458.5000
 Global office listings: [bentley.com/contact](https://www.bentley.com/contact)

© 2025 Bentley Systems, Incorporated. Bentley, the Bentley logo, AutoPIPE, AutoPLANT, OpenPlant, OpenPlant Isometrics Manager, and ProjectWise are either registered or unregistered trademarks or service marks of Bentley Systems, Incorporated or one of its direct or indirect wholly owned subsidiaries. Other brands and product names are trademarks of their respective owners. 5275